

MONTHLY MEMBERSHIP PROGRESS REPORT

LOCATION INDONESIA

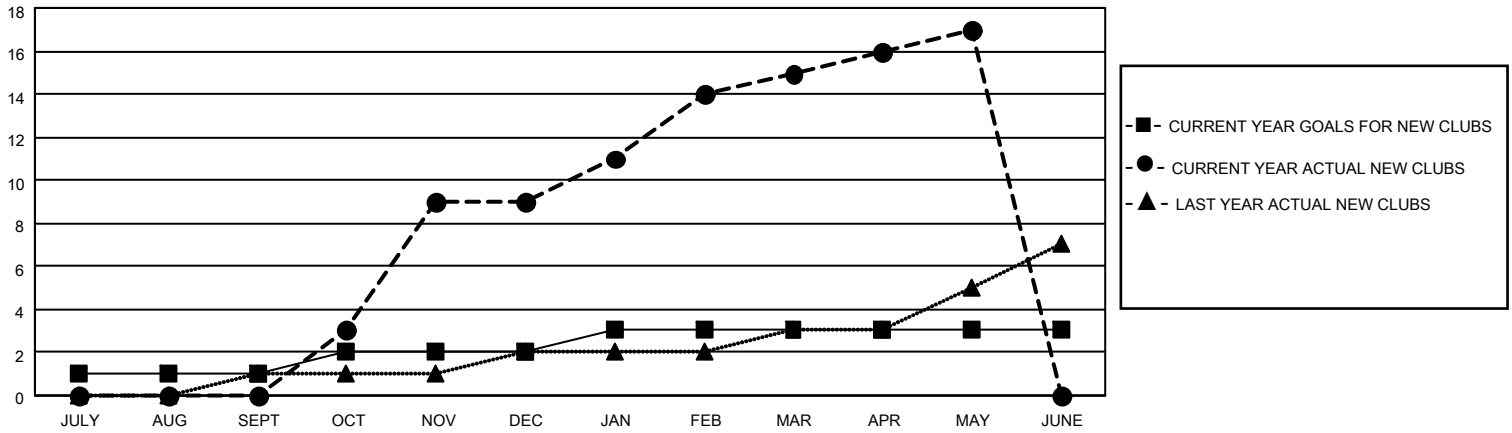
District 307 A1

Results as of: 5/31/2022

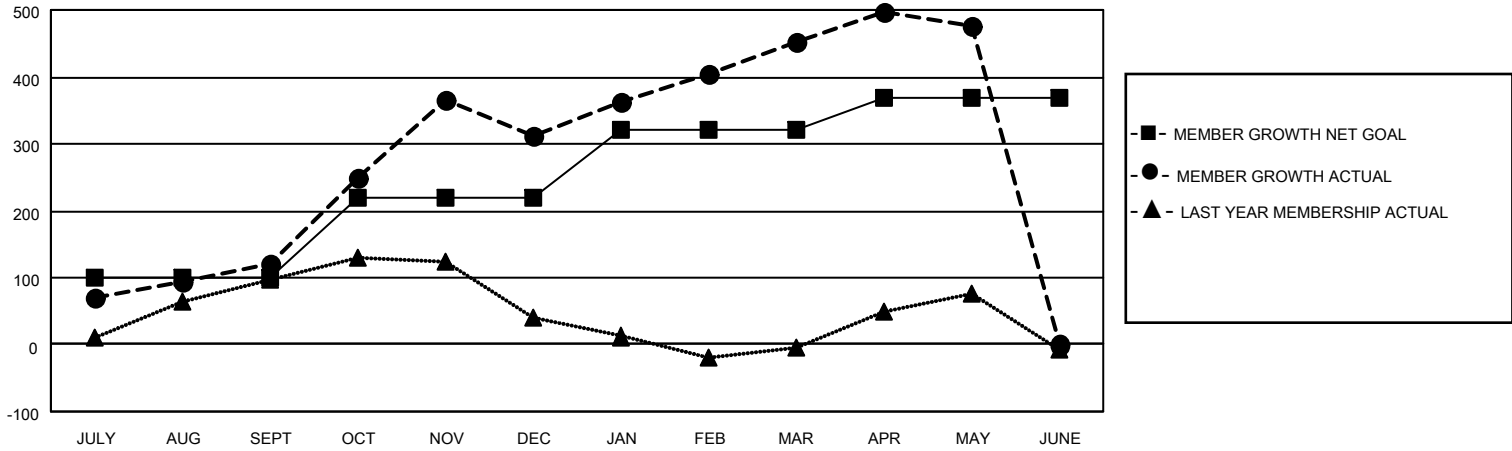
| Clubs | | | |
|-----------------------|---------------|-----------|---------------|
| RESULTS FOR 2021-2022 | | | |
| QUARTER | NEW CLUB GOAL | NEW CLUBS | DROPPED CLUBS |
| JULY/AUG/SEPT | 1 | 0 | 2 |
| OCT/NOV/DEC | 1 | 9 | 0 |
| JAN/FEB/MAR | 1 | 6 | 0 |
| APR/MAY/JUNE | 0 | 2 | 0 |

| Members | | | |
|-----------------------|------------------------|----------------------|---|
| RESULTS FOR 2021-2022 | | | |
| QUARTER | MEMBER GROWTH NET GOAL | MEMBER GROWTH ACTUAL | DROPPED MEMBERS ACTUAL (including transfers) |
| JULY/AUG/SEPT | 100 | 183 | 52 |
| OCT/NOV/DEC | 120 | 342 | 147 |
| JAN/FEB/MAR | 100 | 215 | 68 |
| APR/MAY/JUNE | 50 | 107 | 73 |

GOALS AND ACTUAL NEW CLUBS CUMULATIVE



GOALS AND ACTUAL MEMBERS CUMULATIVE



DROPPED CLUBS: 2

80 CLUBS OF 105 ADDED 1 OR MORE NEW MEMBERS

GENDER DISTRIBUTION

| | |
|----------------------|----------------|
| MALE | 1,013 (38.04%) |
| FEMALE | 1,650 (61.96%) |
| NON BINARY | 0 (0.00%) |
| PREFER NOT TO ANSWER | 0 (0.00%) |

DROPPED MEMBERS

[CLICK HERE FOR CUMULATIVE MEMBERSHIP DATA](#)

| | |
|----------------|------------|
| DECEASED | 9 |
| CLUB CANCELLED | 15 |
| OTHER | 316 |
| TOTAL | 340 |

TOTAL FAMILY UNIT MEMBERS 885

FAMILY MEMBERS PAYING HALF DUES 542